

Scaled data based on original data using
LM-79-08 Approved Method: Electrical and Photometric Measurements of Solid-State
Lighting Products

Test Report Prepared for
Cooper Lighting Solutions
(formerly Eaton)

Brand: LUMIERE

Report Number: G2-1802-569-37

Luminaire Tested: **203-SS-8LED4010-12-CS-LSL**

Test Date: 04/05/18

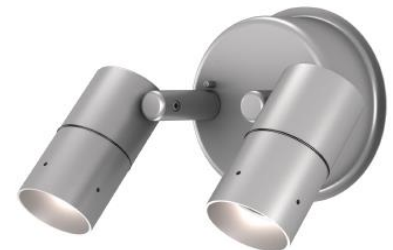
Test Information

Test Method: LM-79-08
Report Number: G2-1802-569-37
REPORT IS SCALED FROM IESNA LM-79-08 TEST DATA (G2-1802-569-37)
Test Lab: INNOVATION CENTER(G2)
Test Date: 04/05/18
Issue Date: 3/3/2020
Manufacturer: COOPER LIGHTING SOLUTIONS (FORMERLY EATON)
Product Line: LUMIERE
Catalog Number: 203-SS-8LED4010-12-CS-LSL
Description: CAMBRIA 203 LED LUMINAIRE, 8 WATT, 4000K CCT, 10 DEGREE SPOT OPTIC,
REGRESSED HOOD SILVER, LINEAR SPREAD LENS
Light Source: (1) SORAA 4000K 95 CRI 10° NSP LED
SM16-07-10D-940-03
Ballast/Driver: CHROMA POWER SUPPLY IN0004

Summary

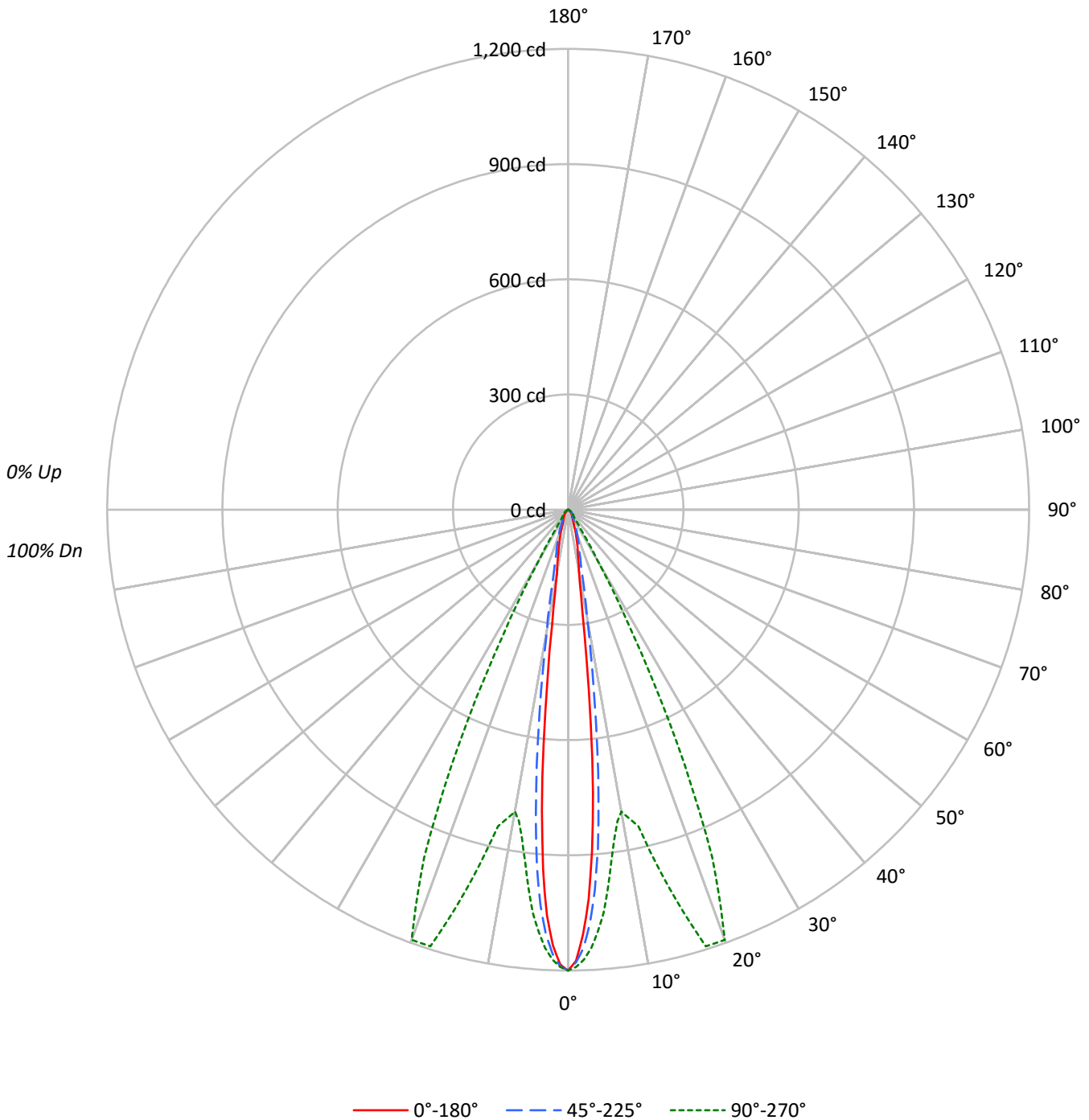
Lumens per Lamp: N/A
Luminaire Lumens: 252.7 lumens
Efficiency: N/A
Efficacy: 33.7 lumens/watt
Spacing Criteria (0/90/45): 0.21 / 0.89 / 0.26
Luminous Opening: Circular (Dia: 0.17' x H: 0')
CIE Type: Direct

Input Watts (W): 7.5
Input Voltage (V): 12.0
Input Current (Ain): 0.656
Voltage Rise (V): NR
Power Factor: 0.9482
Total Harmonic Distortion (THDi): 25.7
Frequency (hertz): 60
Stabilization Time: 0.5 HR
Operation Time: 9 HR
Ambient Temperature (°C): 24.7
Test Distance: 25 FT



TEST NUMBER: G2-1802-569-37
CATALOG NUMBER: 203-SS-8LED4010-12-CS-LSL

Luminous Intensity Polar Plot





TEST NUMBER: G2-1802-569-37

CATALOG NUMBER: 203-SS-8LED4010-12-CS-LSL

COEFFICIENT OF UTILIZATION - ZONAL CAVITY METHOD:

RF	20				20				20				20				20	
RC	80				70				50				30				10	0
RW	70	50	30	10	70	50	30	10	50	30	10	50	30	10	50	30	10	0
RCR																		
0	119	119	119	119	116	116	116	116	111	111	111	106	106	106	102	102	102	100
1	114	112	110	108	112	110	108	106	106	104	103	102	101	100	99	98	97	95
2	110	105	102	99	107	104	100	98	100	98	96	97	95	94	95	93	92	90
3	105	99	95	92	103	98	94	91	96	92	90	93	91	88	91	89	87	85
4	101	94	90	86	99	93	89	86	91	88	85	89	86	84	88	85	83	81
5	97	90	85	81	95	89	84	81	87	83	80	86	82	80	84	81	79	78
6	93	86	81	77	92	85	80	77	84	80	77	82	79	76	81	78	76	74
7	90	82	77	74	89	82	77	74	80	76	73	79	76	73	78	75	72	71
8	87	79	74	71	86	78	74	70	77	73	70	76	73	70	76	72	70	68
9	84	76	71	68	83	75	71	68	75	70	67	74	70	67	73	70	67	66
10	81	73	68	65	80	73	68	65	72	68	65	71	67	65	71	67	65	64

AVERAGE LUMINANCE (cd/sqm):

	0°	90°	180°
0°	592055	592055	592055
5°	366991	522008	388782
10°	80159	399791	84667
15°	45460	522532	45460
20°	24152	625852	23627
25°	15787	364737	16332
30°	12534	88304	13103
35°	10239	21081	10841
40°	9017	14169	9017
45°	7675	12559	7675
50°	6140	9978	6140
55°	5161	7742	5161
60°	2960	3947	2960
65°	2335	2335	1167
70°	1443	1443	1443
75°	1906	1906	1906
80°	0	0	0
85°	0	0	0



TEST NUMBER: G2-1802-569-37

CATALOG NUMBER: 203-SS-8LED4010-12-CS-LSL

ZONAL LUMENS:

Zone	Lumens	% Fixture
0°-10°	67.7	26.8
10°-20°	86.6	34.3
20°-30°	62.0	24.5
30°-40°	16.1	6.4
40°-50°	10.9	4.3
50°-60°	6.5	2.6
60°-70°	2.0	0.8
70°-80°	0.9	0.4
80°-90°	0.0	0.0
90°-100°	0.0	0.0
100°-110°	0.0	0.0
110°-120°	0.0	0.0
120°-130°	0.0	0.0
130°-140°	0.0	0.0
140°-150°	0.0	0.0
150°-160°	0.0	0.0
160°-170°	0.0	0.0
170°-180°	0.0	0.0
0°-30°	216.3	85.6
0°-40°	232.4	92.0
0°-60°	249.7	98.8
0°-90°	252.7	100.0
90°-120°	0.0	0.0
90°-150°	0.0	0.0
90°-180°	0.0	0.0
0°-180°	252.7	100.0

CANDELA DISTRIBUTION:

	0°	45°	90°	135°	180°	Flux
0°	1200	1200	1200	1200	1200	
5°	741	885	1054	932	785	47
15°	89	113	1023	120	89	25
25°	29	41	670	42	30	14
35°	17	21	35	21	18	11
45°	11	14	18	14	11	8
55°	6	7	9	7	6	5
65°	2	2	2	2	1	2
75°	1	1	1	1	1	1
85°	0	0	0	0	0	0
90°	0	0	0	0	0	



TEST NUMBER: G2-1802-569-37

CATALOG NUMBER: 203-SS-8LED4010-12-CS-LSL

CANDELA DISTRIBUTION (FULL):

	0°	22.5°	45°	67.5°	90°	112.5°	135°	157.5°	180°
0°	1200	1200	1200	1200	1200	1200	1200	1200	1200
1°	1175	1177	1179	1185	1191	1189	1189	1191	1185
2°	1107	1129	1142	1159	1172	1168	1158	1151	1135
3°	1015	1050	1078	1120	1143	1134	1108	1084	1058
4°	892	938	993	1066	1102	1086	1034	982	939
5°	741	802	885	998	1054	1024	932	848	785
6°	560	644	754	910	990	940	807	687	614
7°	394	477	620	824	922	858	672	516	437
8°	263	331	486	737	864	773	536	362	303
9°	195	231	371	664	821	699	417	255	216
10°	160	177	281	605	798	641	319	191	169
12.5°	117	124	158	497	844	533	177	128	119
15°	89	93	113	424	1023	463	120	97	89
17.5°	65	71	90	355	1192	397	94	73	65
20°	46	52	70	265	1192	308	73	53	45
22.5°	36	39	54	169	980	199	56	39	35
25°	29	31	41	102	670	117	42	31	30
27.5°	25	26	33	67	359	73	33	27	26
30°	22	23	27	44	155	45	27	24	23
32.5°	19	21	23	32	65	32	24	21	20
35°	17	19	21	25	35	25	21	19	18
37.5°	15	17	19	22	27	22	19	18	16
40°	14	15	17	19	22	20	17	16	14
42.5°	12	14	15	17	20	17	16	14	13
45°	11	12	14	15	18	16	14	13	11
47.5°	10	11	13	13	16	14	13	11	10
50°	8	10	11	12	13	12	11	9	8
52.5°	7	8	10	10	11	10	9	8	7
55°	6	7	7	8	9	8	7	6	6
57.5°	5	5	6	6	6	6	5	5	4
60°	3	4	4	4	4	4	4	3	3
62.5°	2	2	2	3	3	2	2	2	2
65°	2	2	2	2	2	2	2	2	1
67.5°	1	1	2	2	2	2	1	1	1
70°	1	1	1	1	1	1	1	1	1
72.5°	1	1	1	1	1	1	1	1	1
75°	1	1	1	1	1	1	1	1	1
77.5°	1	1	1	1	1	1	1	0	0
80°	0	0	1	1	0	0	0	0	0
82.5°	0	0	0	0	0	0	0	0	0
85°	0	0	0	0	0	0	0	0	0
87.5°	0	0	0	0	0	0	0	0	0
90°	0	0	0	0	0	0	0	0	0

(END OF REPORT)